



Custom made EL and LED Lighting


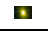
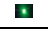


www.wkled.nl

wim@wkled.nl

WK LED BACKLIGHT MODULES



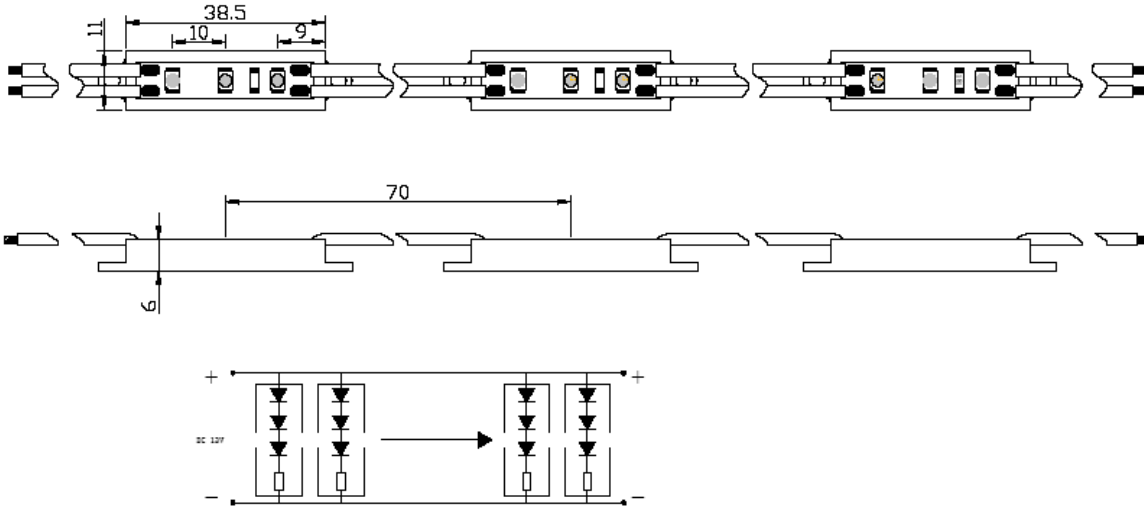
photoelectric properties performance environmental temperature: 25 ° C

Type	Color	Input voltage	Power	Dimension	Emit angle	Wavelength	Flux	LED Qty
WK-3R-WP	R 	12VDC	0.3w	45*15*4mm	120°	624nm	7lm	3R
WK-3Y-WP	Y 	12VDC	0.3w	45*15*4mm	120°	595nm	6lm	3Y
WK-3G-WP	G 	12VDC	0.3w	45*15*4mm	120°	515nm	9lm	3G
WK-3B-WP	B 	12VDC	0.3w	45*15*4mm	120°	470nm	7lm	3B
WK-3W-WP	W 	12VDC	0.3w	45*15*4mm	120°	5500K	11lm	3W

Features:

- * Voltage input 12V, 50 modules in a string max.
- * Super small, thin, with adhesive backstrip and suitable for all sizes channel letters!
- * Adopt Taiwan Strawhat high brightness LED, low degradation!
- * Wide illumination angle design half power angle is more than 120 degrees, even colour and no light spot
- * Adopt net constant current circuit design, strong resistance against static electricity ensures the stability of module.
- * Many pure colours available for client's choice at will
- * Special waterproof treatment technics, V0 fireproof level, PC bracket, fill the epoxide resin which has high coefficient of thermal conductivity, by which the welding spot can prevent the oxynization caused by vapour and the avoided the hidden trouble of heat elimination among modules. Level of protection is IP68.
- * Use the advanced soft silica gel as wire. The wire will not age or brittle fracture under harsh Circumstance (-45 0C~300 0C), and its small resistance can reduce the effect to circuit from voltage drop.
- * Operating temperature -25 / 120+ degrees Celcius

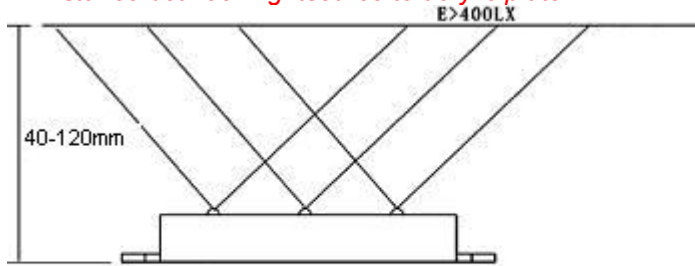
Sizes:



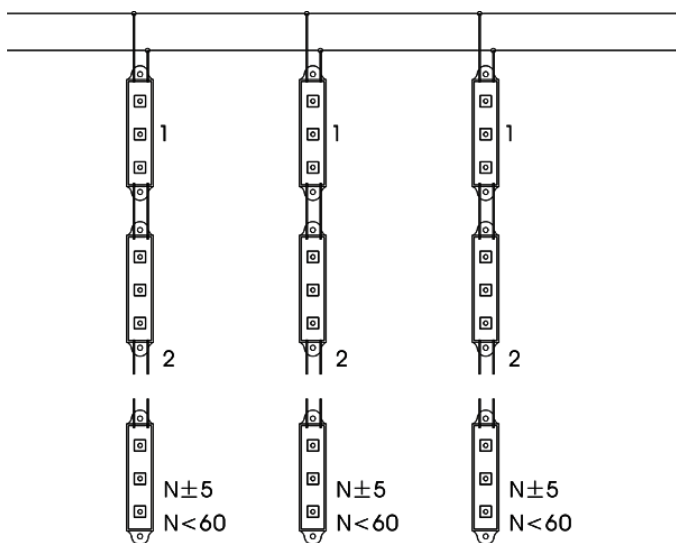
Installation illustration:

1: Distance between modules
Max. 70mm

2: Distance between lightsource to acrylic plate



3: Maximum LED module number is 50 in a loop and make the amount similar



4. The calculating method of rated power is that: module power consumption* module number*1.2
for example: 100 pieces WK-3W-WP modules, $100 \times 0.3 \times 1.2 = 36W$, so 1pc of 60W power supply can be used.

5. The 0.75mm or 18AWG wire is always used as the cable, the distance between power outlet and the first module should within 5 meters. NOTE! always ground the cable!